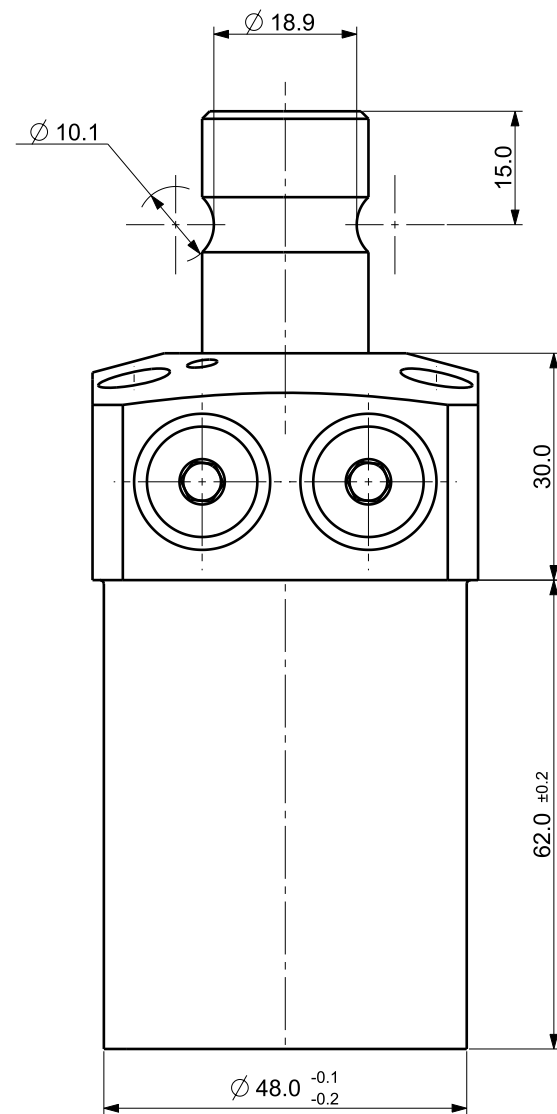
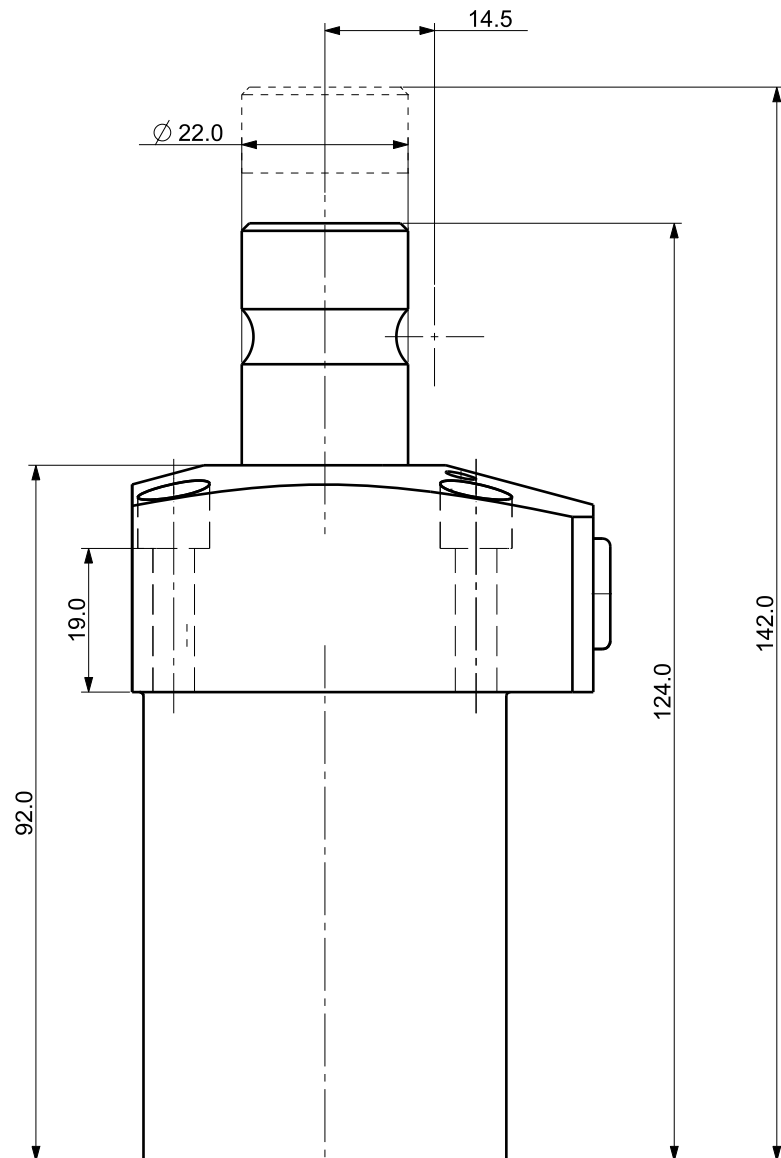

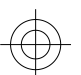
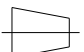



Isometric view (3:4)



NOTE

- MODEL No : CSDR-3618GQ
- PISTON DIA : $\phi 36.0$
- ROD DIA : $\phi 22.0$
- STROKE = 18.0mm(Straight : 8.0 mm+Swing : 10.0 mm)
- OPERATING PRESSURE : 20~70 Kg/Cm²)
- OPERATING TEMPERATURE : 0 ~ 60 °C

UNLESS OTHERWISE SPECIFIED		SIGNATURES	MO-DA-YR	<div> (주)케이제이에프 TOTAL CLAMPING SYSTEMS</div>		
DIMENSIONS ARE IN MM		DRAWN OYS	00-00-00	<div>TITLE</div> <div>SWING CLAMP</div>		
ALL SURFACES 6.3S		CHECKED				
TOLERANCES		APPROVED				
ANGLE		<div></div>				
X. ±						
.X ± 0.15						
.XX ±						
FINISH		WORK ORDER NO		REF DWG NO.	DWG NO	A3
BLOCK OXIDE				---	CSDR-3618GQ	
HEAT TREAT				SCALE 	TOOL <input type="checkbox"/> PART <input type="checkbox"/> SHEET <input type="checkbox"/> OF	
HRC18~22						