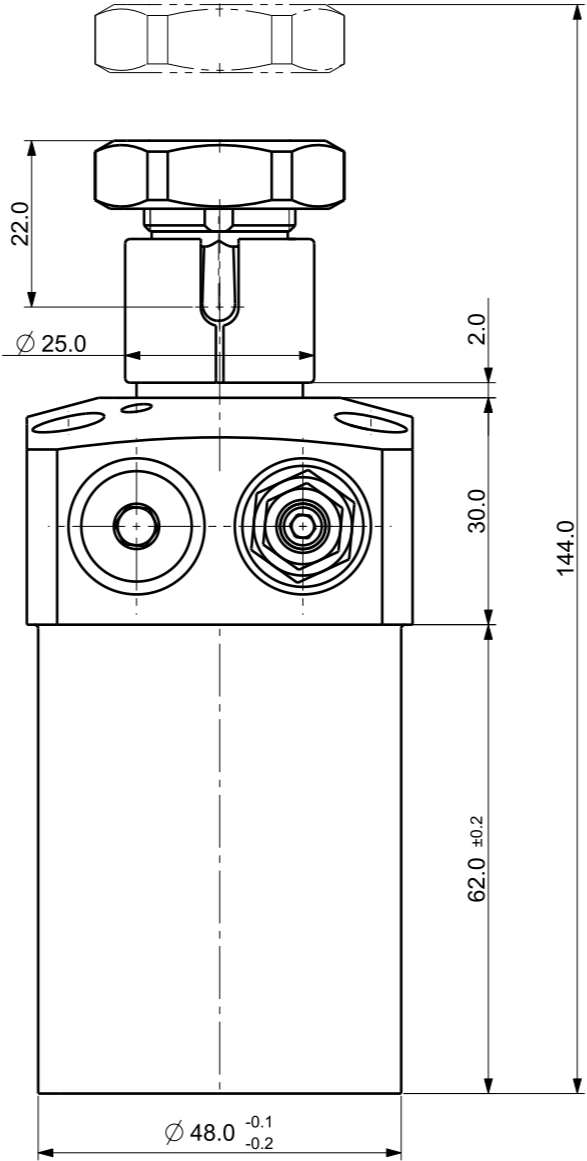
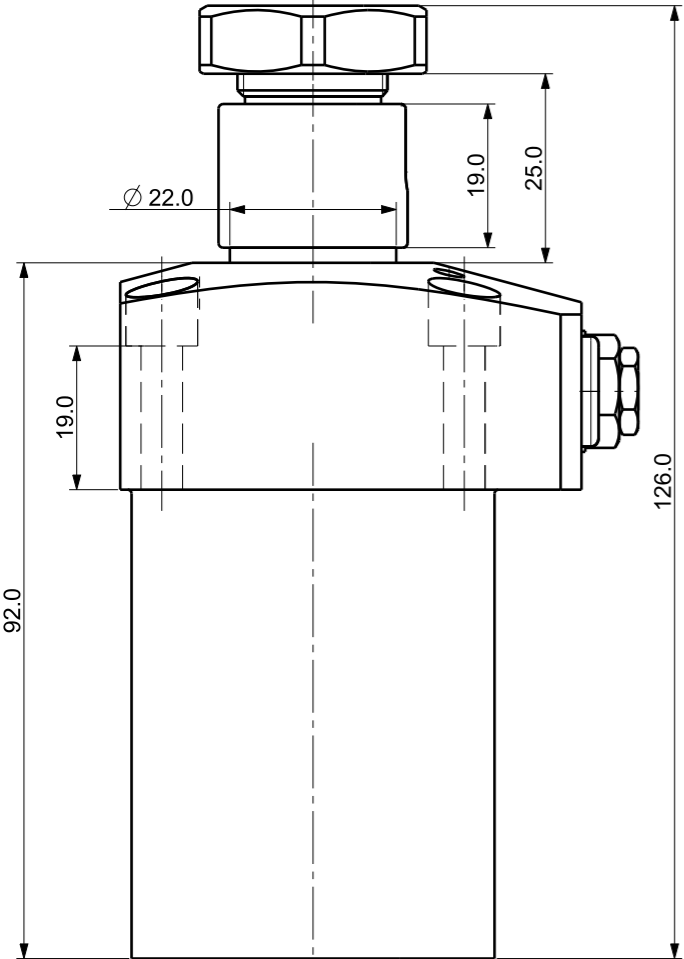

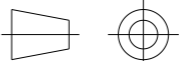



Isometric view (3:4)



NOTE

1. MODEL No : CSDR-3618GV
1. PISTON DIA : ϕ 36.0
2. ROD DIA : ϕ 22.0
3. STROKE = 18.0mm(Straight : 8.0 mm+Swing : 10.0 mm)
4. OPERATING PRESSURE : 20~70 Kg/Cm²)
5. OPERATING TEMPERATURE : 0 ~ 60 °C

UNLESS OTHERWISE SPECIFIED		SIGNATURES		MO-DA-YR		<div><div></div><div>(주)케이제이에프</div><div>TOTAL CLAMPING SYSTEMS</div></div>		
DIMENSIONS ARE IN MM		DRAWN				<div>TITLE</div> <div>SWING CLAMP</div>		
ALL SURFACES 6.3S		CHECKED						
TOLERANCES		APPROVED						
ANGLE		<div></div>						
X.								
X								
XX								
FINISH		WORK ORDER NO		REF DWG NO.		DWG NO		A3
HEAT TREAT				---		CSDR-3618GV		
				SCALE 		TOOL <input type="checkbox"/> PART <input type="checkbox"/>		SHEET OF