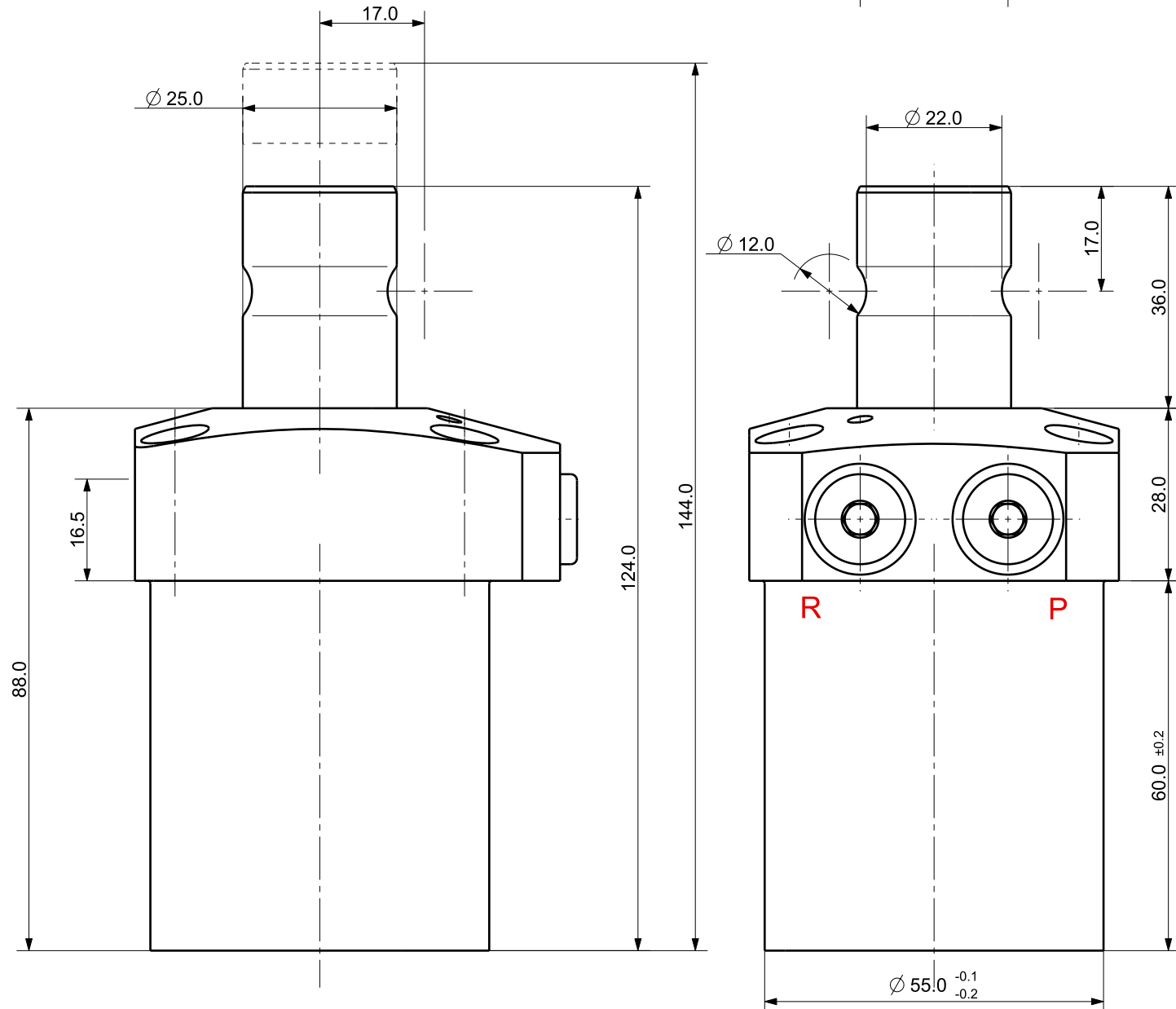


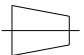


NOTE

- MODEL No : CSDR-4220GQ
- PISTON DIA : ϕ 42.0
- ROD DIA : ϕ 25.0
- STROKE = 20.0mm(Straight : 10.0 mm+Swing : 10.0 mm)
- OPERATING PRESSURE : 20~70 Kg/Cm²)
- OPERATING TEMPERATURE : 0 ~ 60 °C



UNLESS OTHERWISE SPECIFIED		SIGNATURES		MO-DA-YR		<div> (주)케이제이에프</div> <div>TOTAL CLAMPING SYSTEMS</div>			
DIMENSIONS ARE IN MM		DRAWN				TITLE <div>SWING CLAMP</div>			
ALL SURFACES 6.3S		CHECKED							
TOLERANCES		APPROVED							
ANGLE X. ± .X ± 0.15 .XX ±		<div></div>							
FINISH BLOCK OXIDE		WORK ORDER NO		REF DWG NO.		DWG NO		A3	
HEAT TREAT HRC18~22				---		CSDR-4220GQ			
				SCALE		TOOL <input type="checkbox"/> PART <input type="checkbox"/> SHEET		OF	