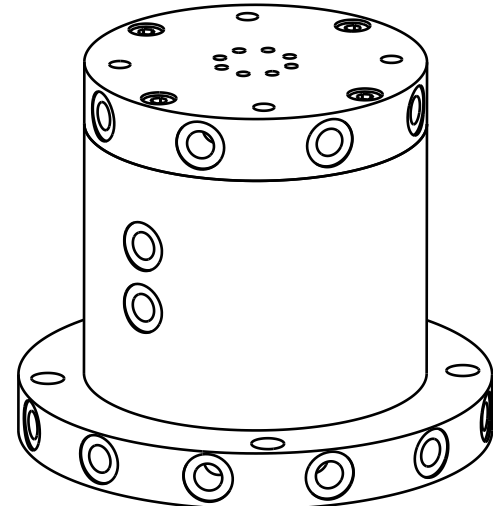
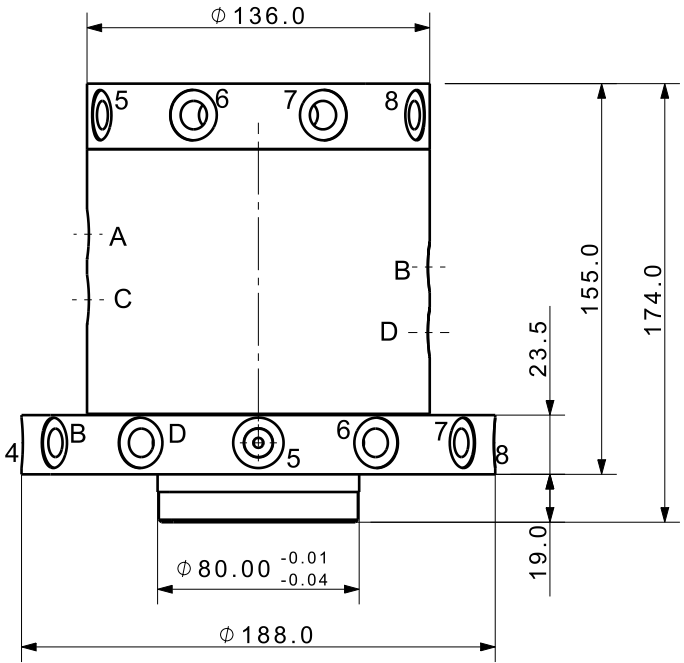
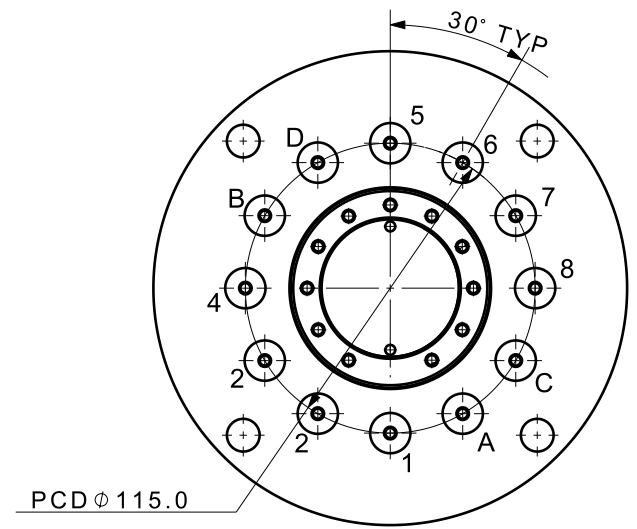


Section view A-A (1:3)



Isometric view (1:3)

- 주 기)
1. 사용 압력 : 254 Kg/Cm²
 2. 회전속도 : 20 MIN
 3. 사용온도 : -10~70 °C
 4. 사용유체 : ISO-VG32 or AIR

DET.NO	NAME	Q'TY	MAT'L	FINAL SIZES & PART No	REMARK
UNLESS OTHERWISE SPECIFIED		SIGNATURES		MO-DA-YR	
DIMENSIONS ARE IN MM		DRAWN	OYS	00-00-00	
ALL SURFACES 6.3S		CHECKED			
TOLERANCES		APPROVED			
ANGLE					
X.					
.X					
.XX					
FINISH		WORK ORDER NO		REF DWG NO.	DWG NO
BLOCK OXIDE				---	RTC-120_-
HEAT TREAT				SCALE	TOOL <input type="checkbox"/> PART <input type="checkbox"/> SHEET <input type="checkbox"/> OF
HRC18~22					

KJF 케이제이에프(주)
TOTAL CLAMPING SYSTEMS

ROTARY JOINT

RTC-120_-

A3