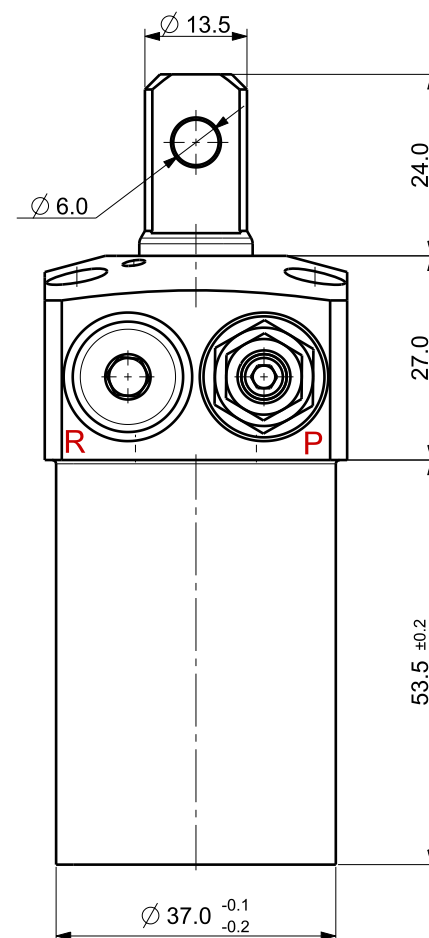
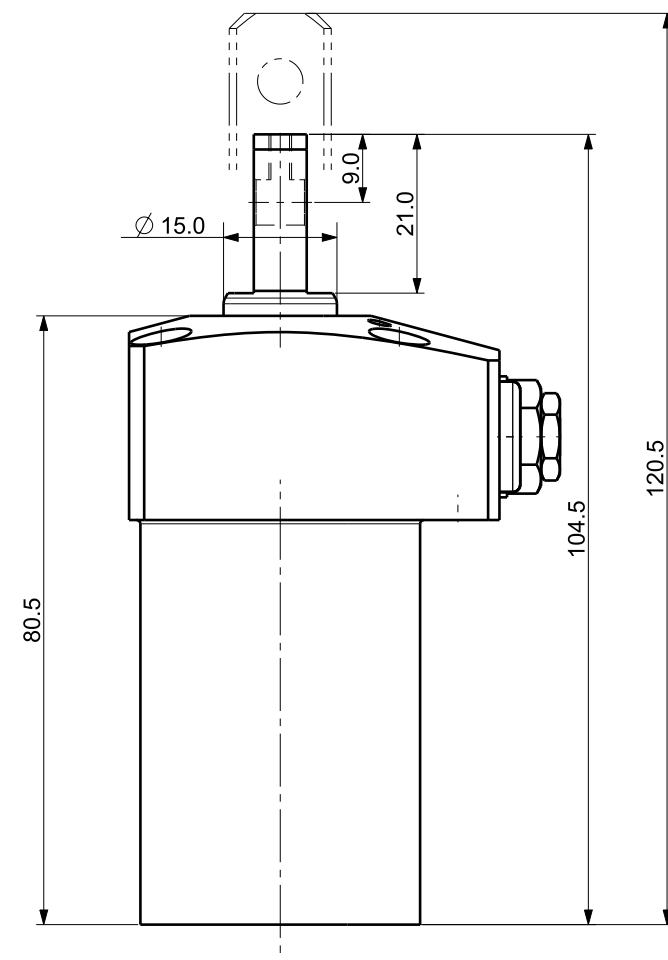

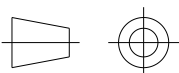


Isometric view (1:1)



NOTE

1. MODEL No : CSDR-2516GPV
1. PISTON DIA : $\phi 25.0$
2. ROD DIA : 15.0
3. STROKE = 16.0mm(Straight : 8.0 mm+Swing : 8.0 mm)
4. OPERATING PRESSURE : 20~70 Kg/Cm²)
5. OPERATING TEMPERATURE : 0 ~ 60 °C

UNLESS OTHERWISE SPECIFIED	SIGNATURES	MO-DA-YR	 (주)케이제이에프 TOTAL CLAMPING SYSTEMS	
DIMENSIONS ARE IN MM	DRAWN		TITLE <h1>SWING CLAMP</h1>	
ALL SURFACES	CHECKED			
TOLERANCES	APPROVED			
ANGLE ± X ± .X ± .XX ±				
FINISH	WORK ORDER NO		REF DWG NO.	DWG NO
HEAT TREAT			---	CSDR-2516GPV
			SCALE	TOOL <input type="checkbox"/> PART <input type="checkbox"/> SHEET <input type="checkbox"/> OF
				A3