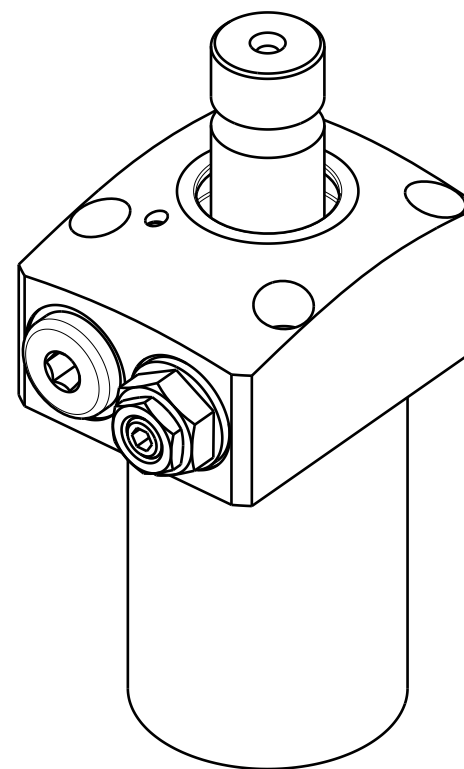
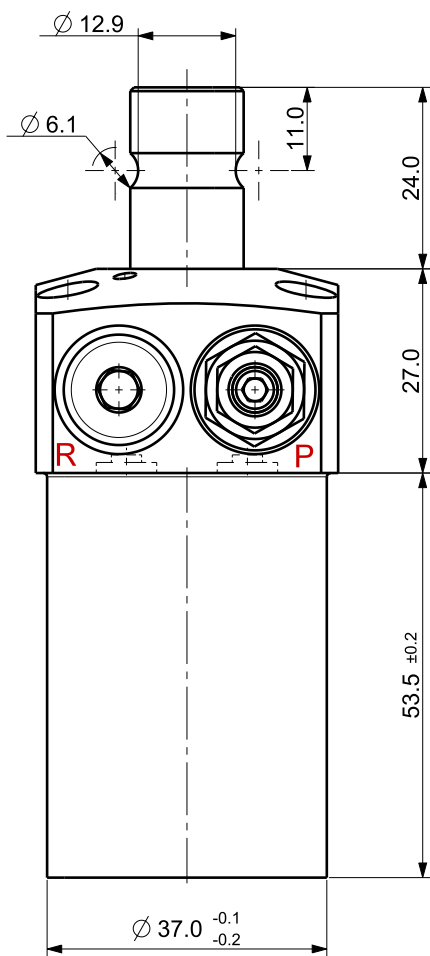
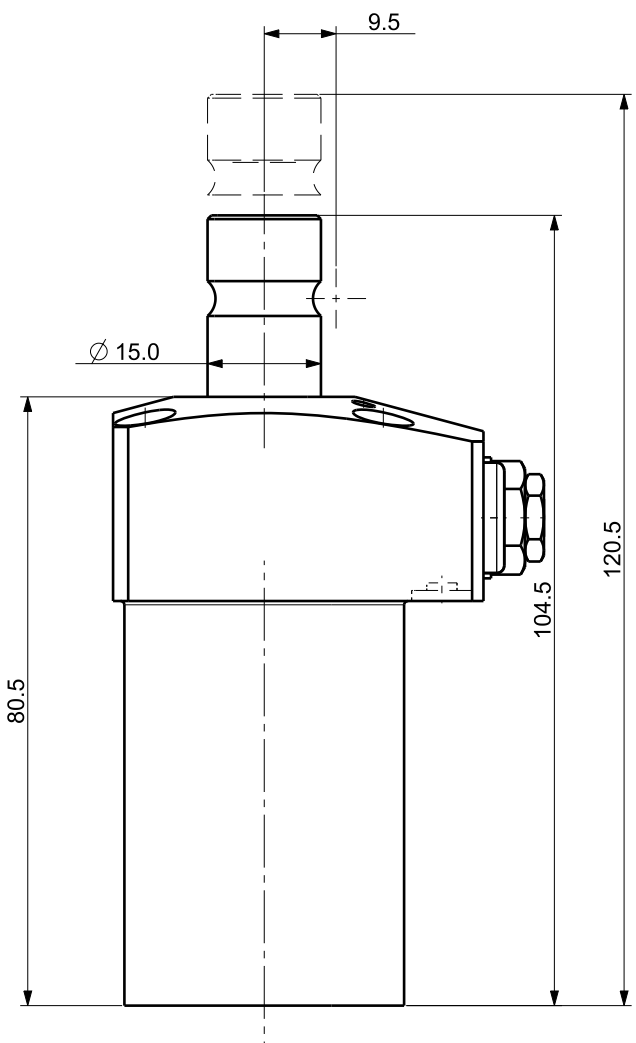
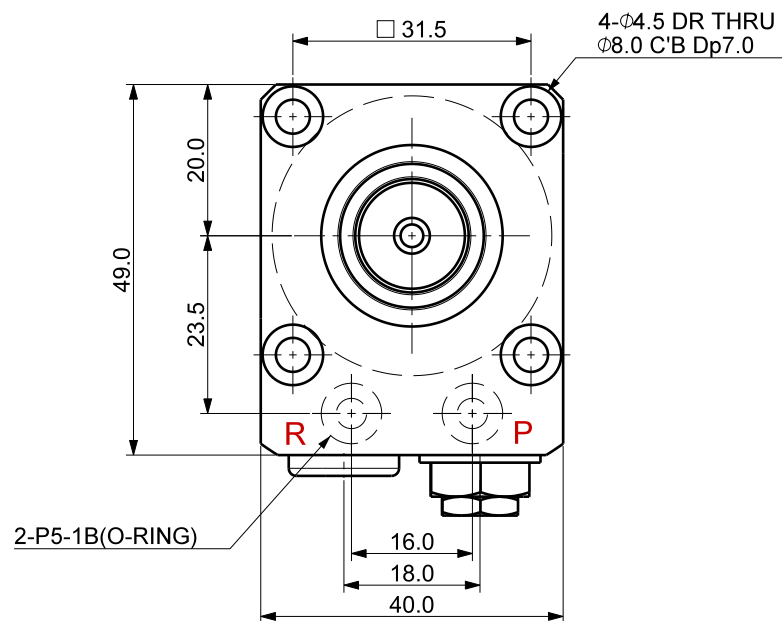



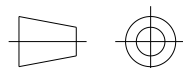

FILE NAME:



Isometric view (1:1)

#### NOTE

- MODEL No : CSDR-2516GQV
- PISTON DIA :  $\phi 25.0$
- ROD DIA : 15.0
- STROKE = 16.0mm(Straight : 8.0 mm+Swing : 8.0 mm)
- OPERATING PRESSURE : 20~70 Kg/Cm<sup>2</sup>
- OPERATING TEMPERATURE : 0 ~ 60 °C

UNLESS OTHERWISE SPECIFIED	SIGNATURES	MO-DA-YR	<div> (주)케이제이에프 TOTAL CLAMPING SYSTEMS</div>			
DIMENSIONS ARE IN MM	DRAWN		TITLE  <b>SWING CLAMP</b>			
ALL SURFACES	CHECKED					
TOLERANCES	APPROVED					
ANGLE X. ± .X ± .XX ±						
FINISH	WORK ORDER NO		REF DWG NO.	DWG NO		A3
HEAT TREAT			---	CSDR-2516GQV		
			SCALE		TOOL <input type="checkbox"/> PART <input type="checkbox"/>	SHEET OF