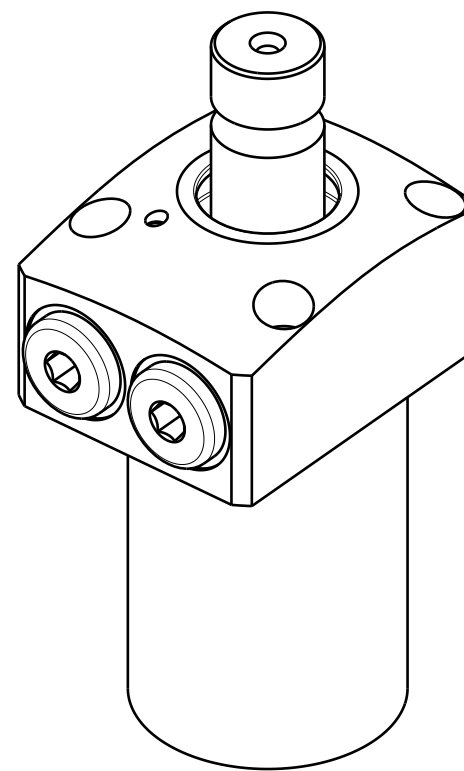
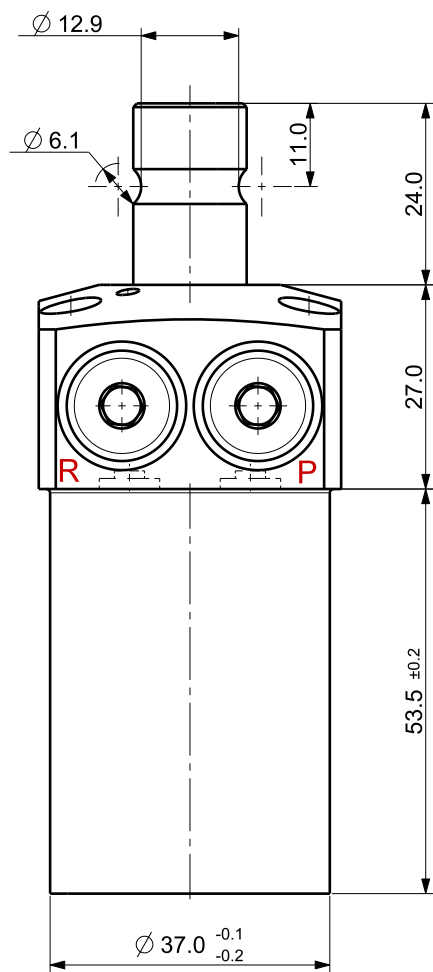
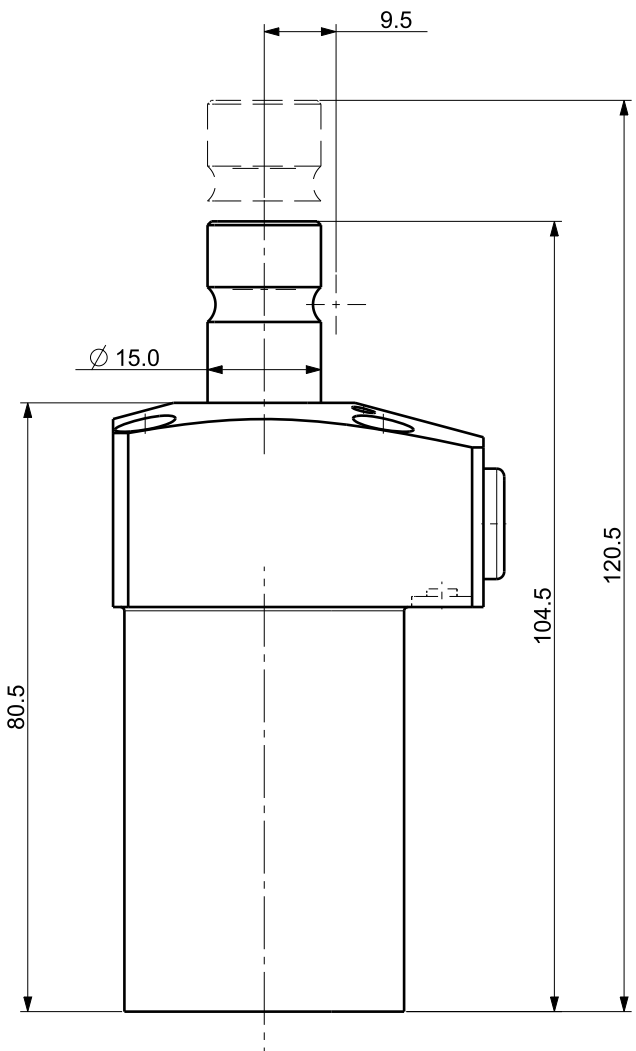
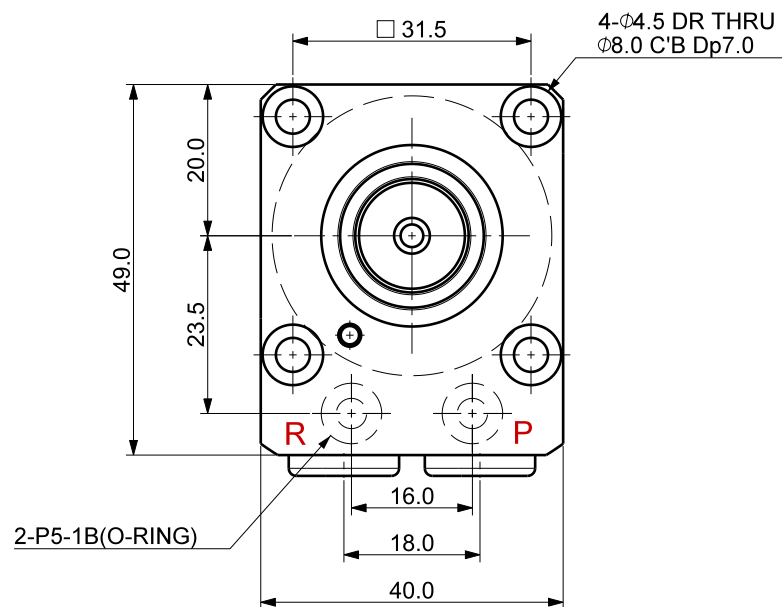



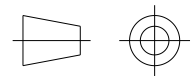
FILE NAME:



Isometric view (1:1)

#### NOTE

- MODEL No : CSDR-2516GQ
- PISTON DIA : Ø25.0
- ROD DIA : 15.0
- STROKE = 16.0mm(Straight : 8.0 mm+Swing : 8.0 mm)
- OPERATING PRESSURE : 20~70 Kg/Cm<sup>2</sup>)
- OPERATING TEMPERATURE : 0 ~ 60 °C

UNLESS OTHERWISE SPECIFIED		SIGNATURES	MO-DA-YR	 (주)케이제이에프 TOTAL CLAMPING SYSTEMS	
DIMENSIONS ARE IN MM		DRAWN			
ALL SURFACES		CHECKED		TITLE	
TOLERANCES		APPROVED			
ANGLE	±			SWING CLAMP	
X.	±				
.X	±				
.XX	±				
FINISH		WORK ORDER NO		REF DWG NO.	DWG NO
HEAT TREAT				---	CSDR-2516GQ
				SCALE	TOOL <input type="checkbox"/> PART <input type="checkbox"/> SHEET <input type="checkbox"/> OF

A3