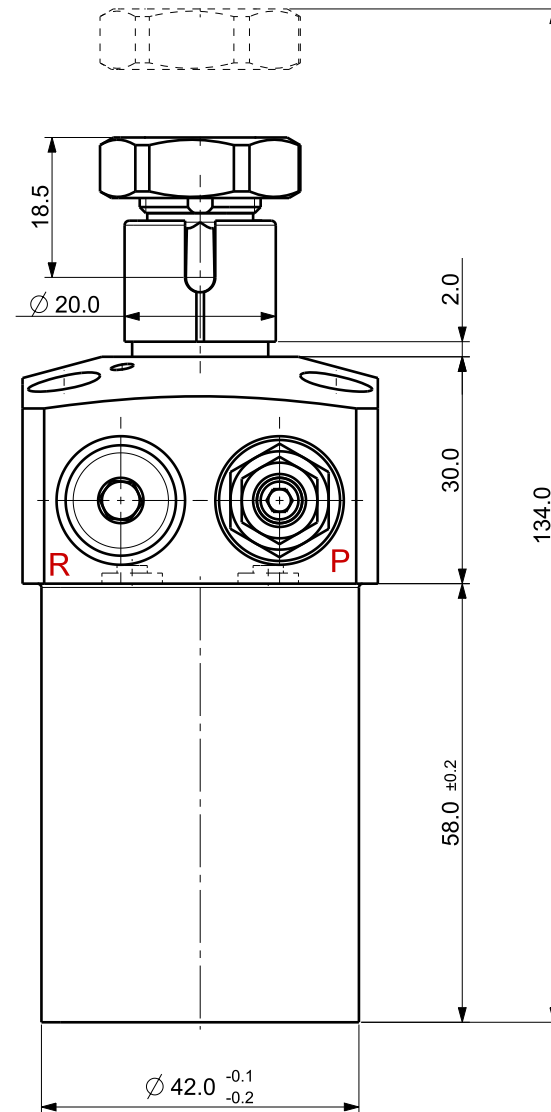
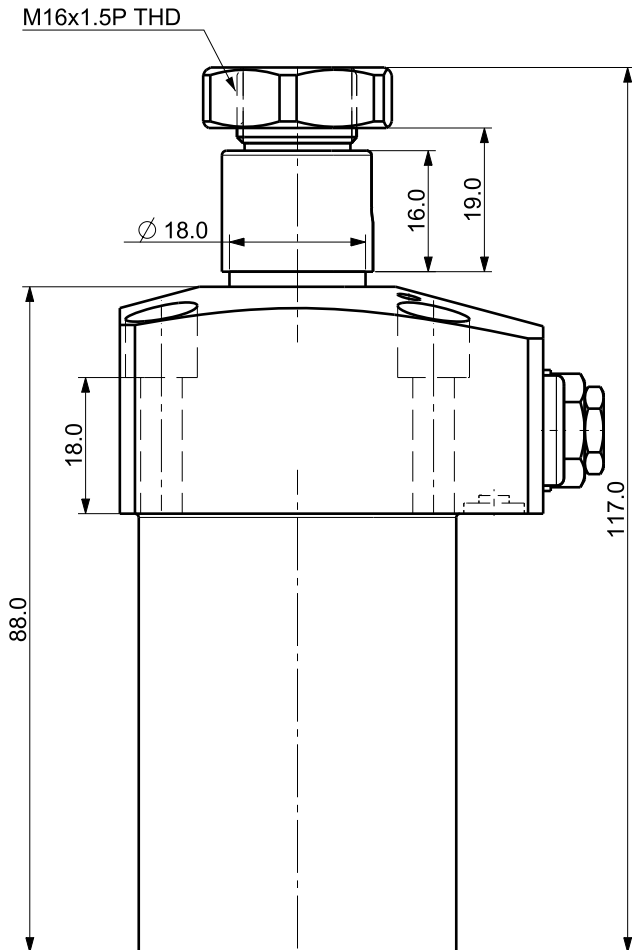

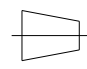


Isometric view (1:1)



#### NOTE

- MODEL No : CSDR-3017GV
- PISTON DIA : Ø30.0
- ROD DIA : Ø18.0
- STROKE = 17.0mm(Straight : 8.0 mm+Swing : 9.0 mm)
- OPERATING PRESSURE : 20~70 Kg/Cm<sup>2</sup>
- OPERATING TEMPERATURE : 0 ~ 60 °C

UNLESS OTHERWISE SPECIFIED		SIGNATURES	MO-DA-YR	 (주)케이제이에프 TOTAL CLAMPING SYSTEMS	
DIMENSIONS ARE IN MM		DRAWN		TITLE	
ALL SURFACES		CHECKED			
TOLERANCES		APPROVED			
ANGLE	±			<b>SWING CLAMP</b>	
X.	±				
.X	±				
.XX	±				
FINISH		WORK ORDER NO		REF DWG NO.	DWG NO
HEAT TREAT				---	CSDR-3017GV
				SCALE	TOOL <input type="checkbox"/> PART <input type="checkbox"/> SHEET <input type="checkbox"/> OF

A3