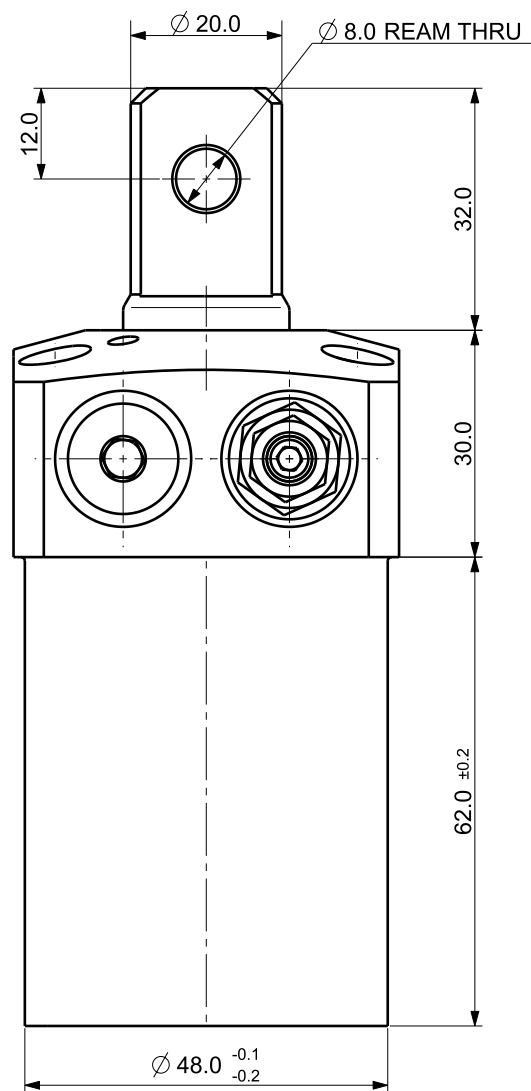
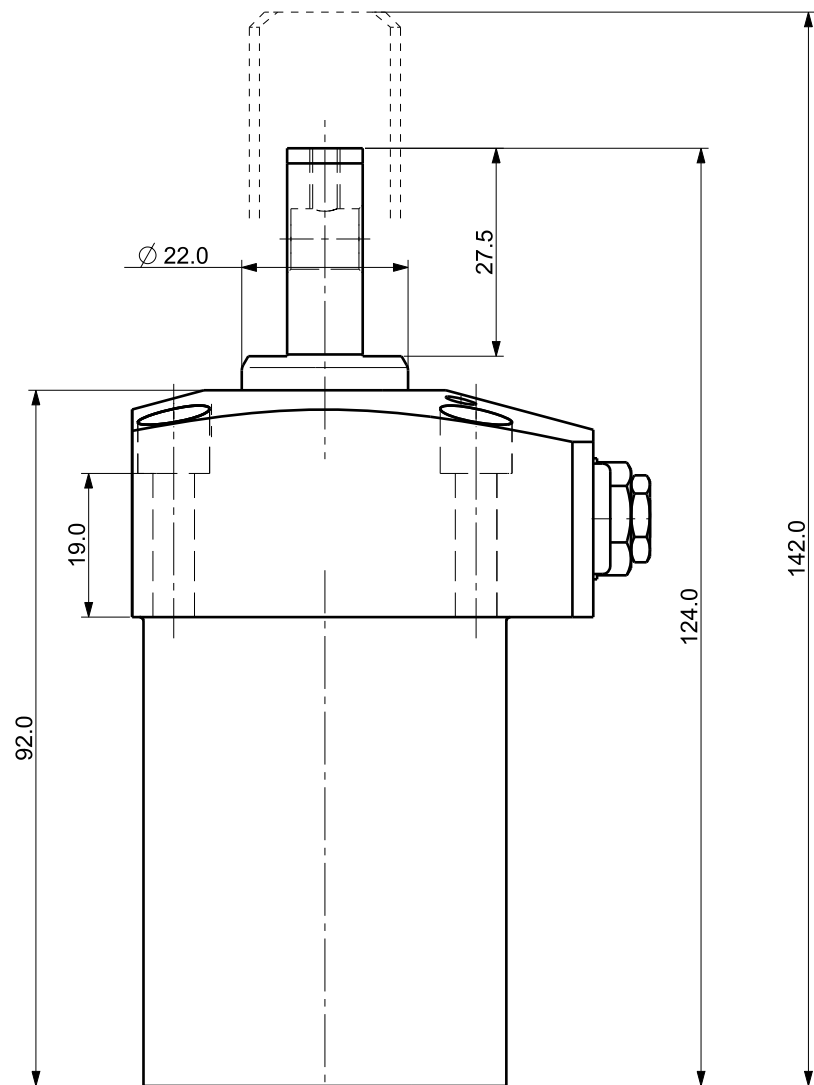

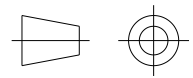
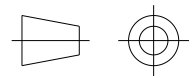


Isometric view (3:4)



NOTE

- MODEL No : CSDR-3618GPV
- PISTON DIA : $\Phi 36.0$
- ROD DIA : $\Phi 22.0$
- STROKE = 18.0mm(Straight : 8.0 mm+Swing : 10.0 mm)
- OPERATING PRESSURE : 20~70 Kg/Cm²)
- OPERATING TEMPERATURE : 0 ~ 60 °C

UNLESS OTHERWISE SPECIFIED	SIGNATURES	MO-DA-YR	 (주)케이제이에프 TOTAL CLAMPING SYSTEMS			
DIMENSIONS ARE IN MM	DRAWN		SWING CLAMP			
ALL SURFACES 6.3S	CHECKED					
TOLERANCES	APPROVED					
ANGLE						
X. ±						
.X ± 0.15						
.XX ±						
FINISH	WORK ORDER NO		REF DWG NO.	DWG NO	CSDR-3618GPV	
HEAT TREAT			---			
			SCALE	TOOL	PART	SHEET OF

A3