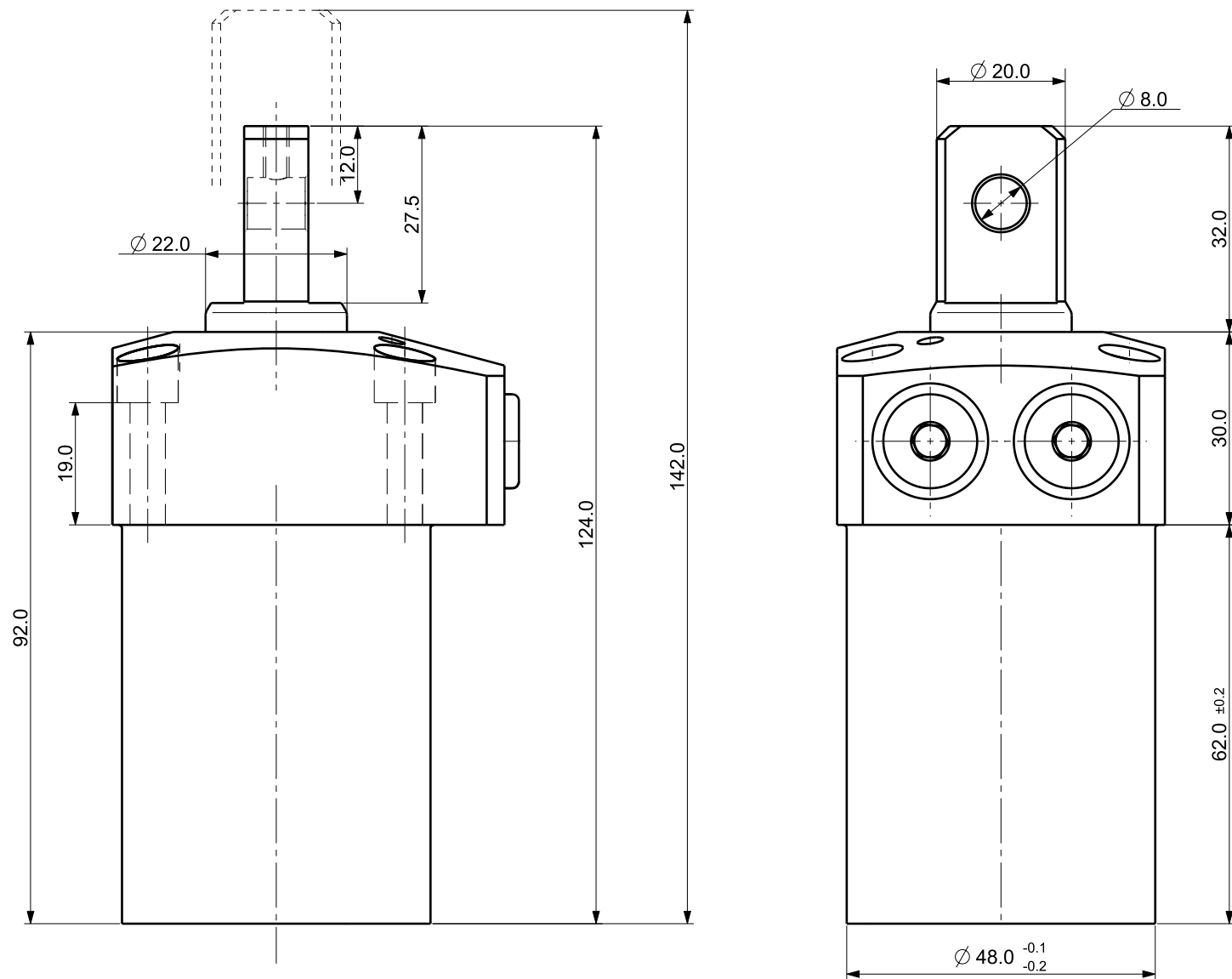

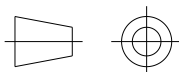



Isometric view (3:4)



NOTE

- MODEL No : CSDR-3618GP
- PISTON DIA : $\phi 36.0$
- ROD DIA : $\phi 22.0$
- STROKE = 18.0mm(Straight : 8.0 mm+Swing : 10.0 mm)
- OPERATING PRESSURE : 20~70 Kg/Cm²)
- OPERATING TEMPERATURE : 0 ~ 60 °C

UNLESS OTHERWISE SPECIFIED		SIGNATURES		MO-DA-YR		<div> (주)케이제이에프</div> <div>TOTAL CLAMPING SYSTEMS</div>		
DIMENSIONS ARE IN MM		DRAWN OYS		00-00-00		<div>TITLE</div> <div>SWING CLAMP</div>		
ALL SURFACES 6.3S		CHECKED						
TOLERANCES		APPROVED						
ANGLE X. ± .X ± 0.15 .XX ±								
FINISH BLOCK OXIDE		WORK ORDER NO		REF DWG NO.		DWG NO		A3
HEAT TREAT HRC18~22				---		CSDR-3618GP		
				SCALE 		TOOL <input type="checkbox"/> PART <input type="checkbox"/> SHEET <input type="checkbox"/>		OF