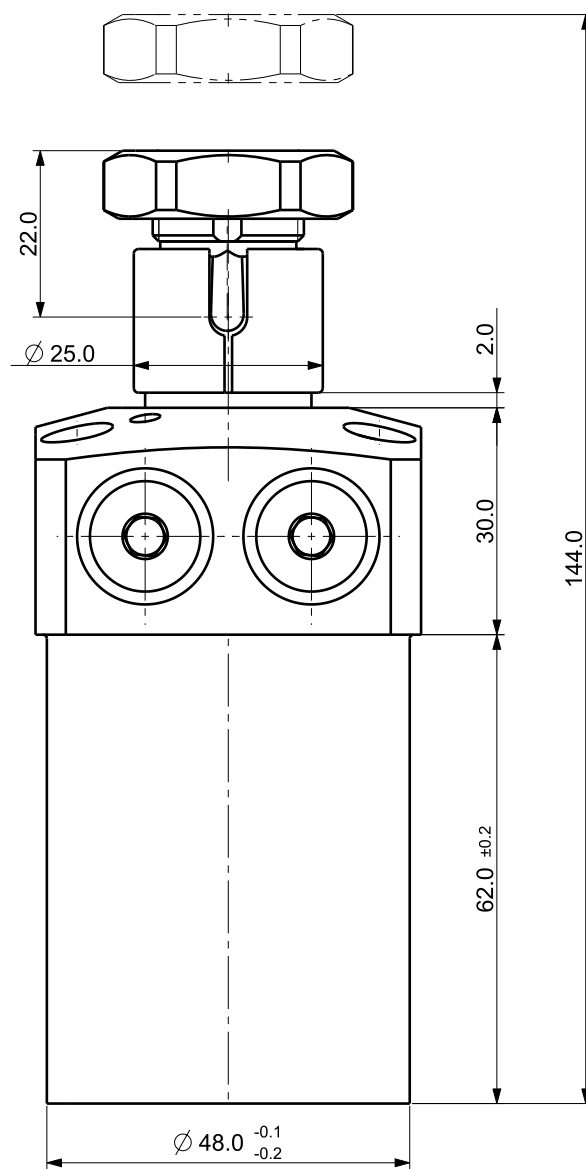
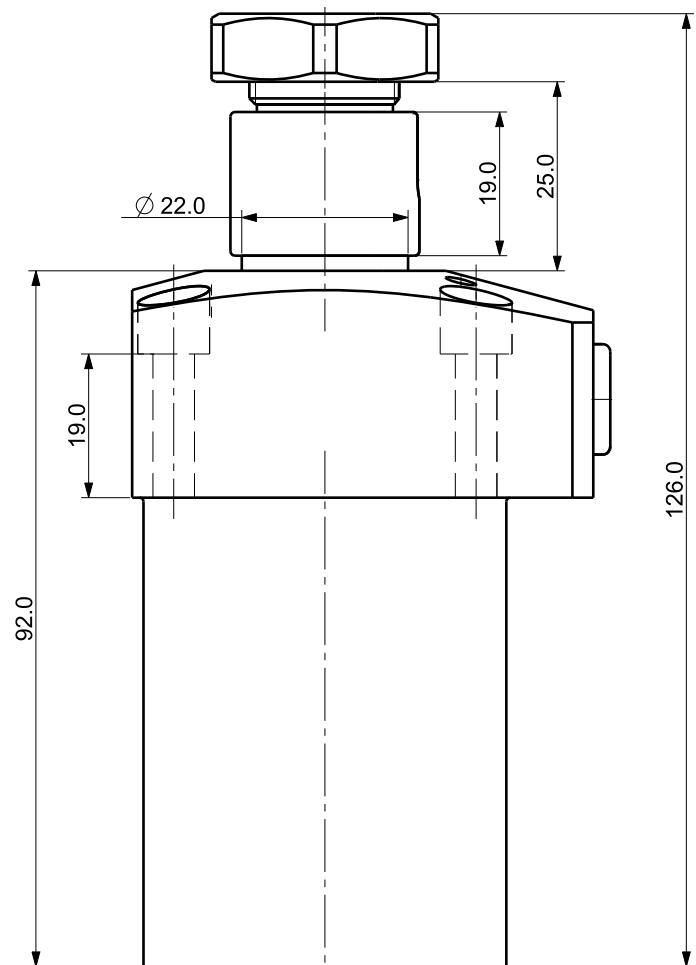

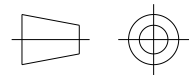


Isometric view (3:4)



NOTE

- MODEL No : CSDR-3618G
- PISTON DIA :  $\phi$ 36.0
- ROD DIA :  $\phi$ 22.0
- STROKE = 18.0mm(Straight : 8.0 mm+Swing : 10.0 mm)
- OPERATING PRESSURE : 20~70 Kg/Cm<sup>2</sup>
- OPERATING TEMPERATURE : 0 ~ 60 °C

UNLESS OTHERWISE SPECIFIED		SIGNATURES	MO-DA-YR	 (주)케이제이에프 TOTAL CLAMPING SYSTEMS		
DIMENSIONS ARE IN MM		DRAWN				
ALL SURFACES 6.3S		CHECKED		TITLE <b>SWING CLAMP</b>		
TOLERANCES		APPROVED				
ANGLE	$\pm$			REF DWG NO. --- DWG NO. <b>CSDR-3618G</b> SCALE / TOOL <input type="checkbox"/> PART <input type="checkbox"/> SHEET OF		
X.	$\pm$					
.X	$\pm$ 0.15					
.XX	$\pm$					
FINISH		WORK ORDER NO		A3		
HEAT TREAT						