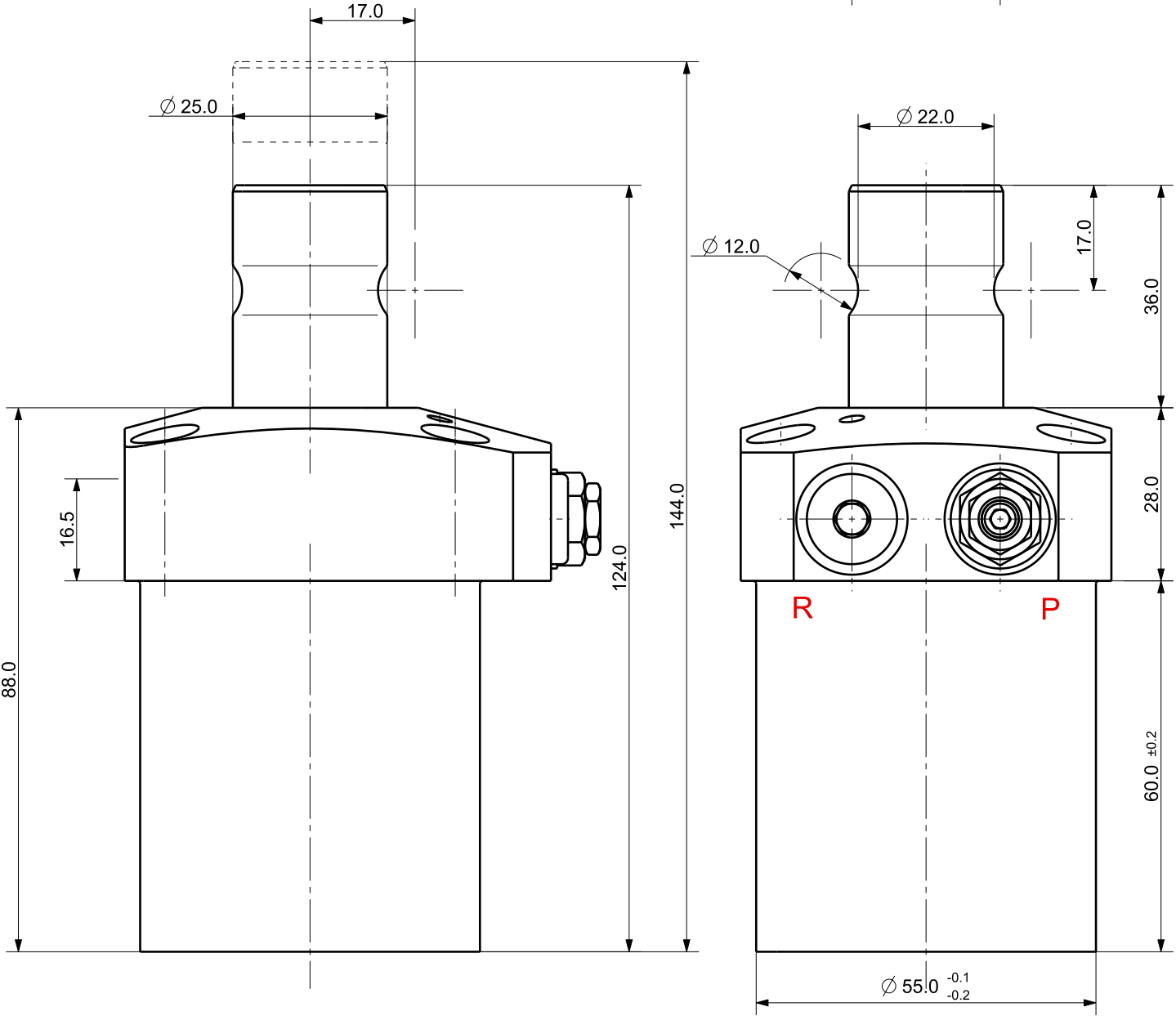

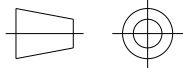



Isometric view (1:1)

NOTE

- 1. MODEL No : CSDR-4220GQV
- 1. PISTON DIA :  $\phi$ 42.0
- 2. ROD DIA :  $\phi$ 25.0
- 3. STROKE = 20.0mm(Straight : 10.0 mm+Swing : 10.0 mm)
- 4. OPERATING PRESSURE : 20~70 Kg/Cm^2)
- 5. OPERATING TEMPERATURE : 0 ~ 60 °C



UNLESS OTHERWISE SPECIFIED		SIGNATURES		MO-DA-YR		<div> (주)케이제이에프</div> <div>TOTAL CLAMPING SYSTEMS</div>		
DIMENSIONS ARE IN MM		DRAWN				<div>TITLE</div> <div>SWING CLAMP</div>		
ALL SURFACES 6.3S		CHECKED						
TOLERANCES		APPROVED						
ANGLE								
X. ±		<div></div>						
.X ± 0.15								
.XX ±								
FINISH		WORK ORDER NO		REF DWG NO.		DWG NO		A3
BLOCK OXIDE				---		CSDR-4220GQV		
HEAT TREAT				SCALE 		TOOL <input type="checkbox"/> PART <input type="checkbox"/> SHEET		
HRC18~22								