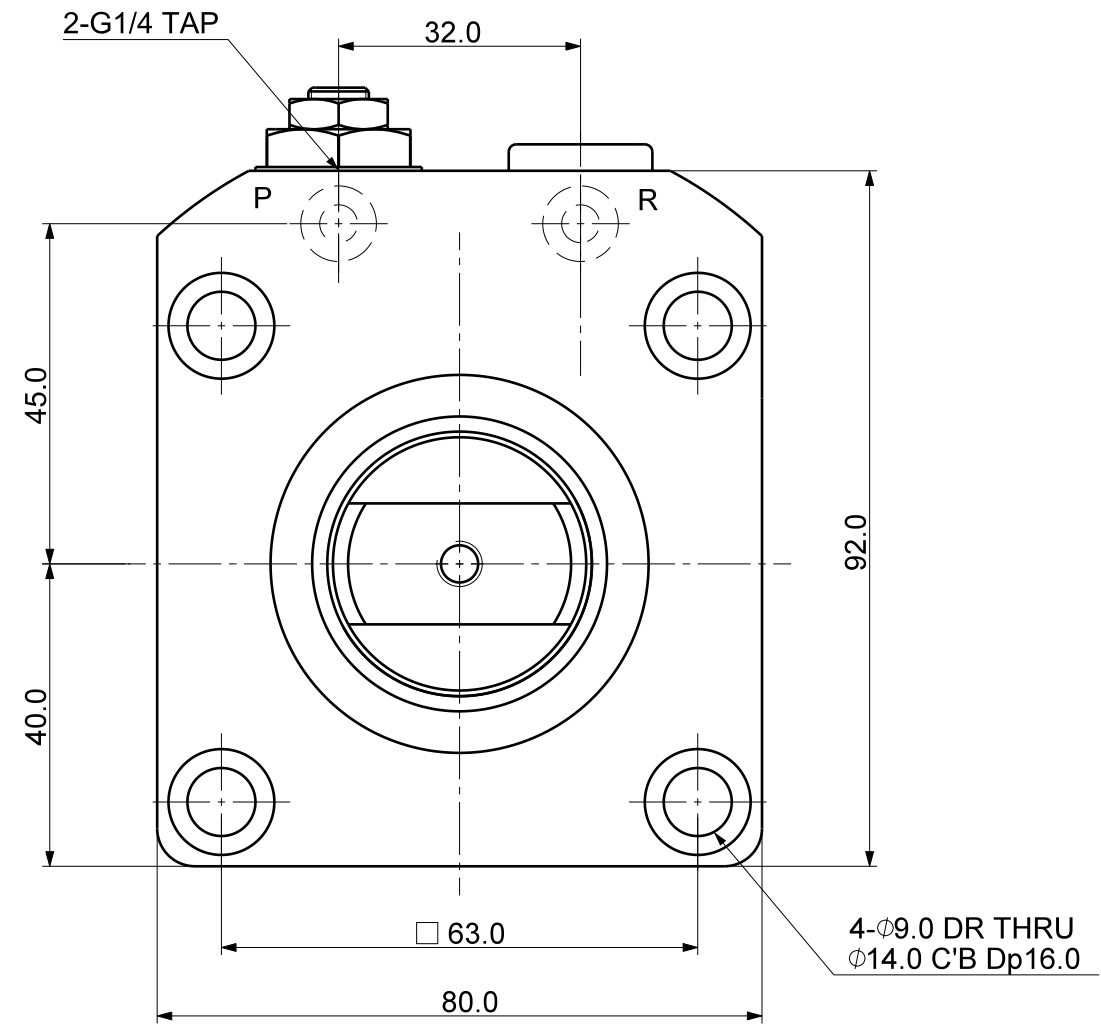
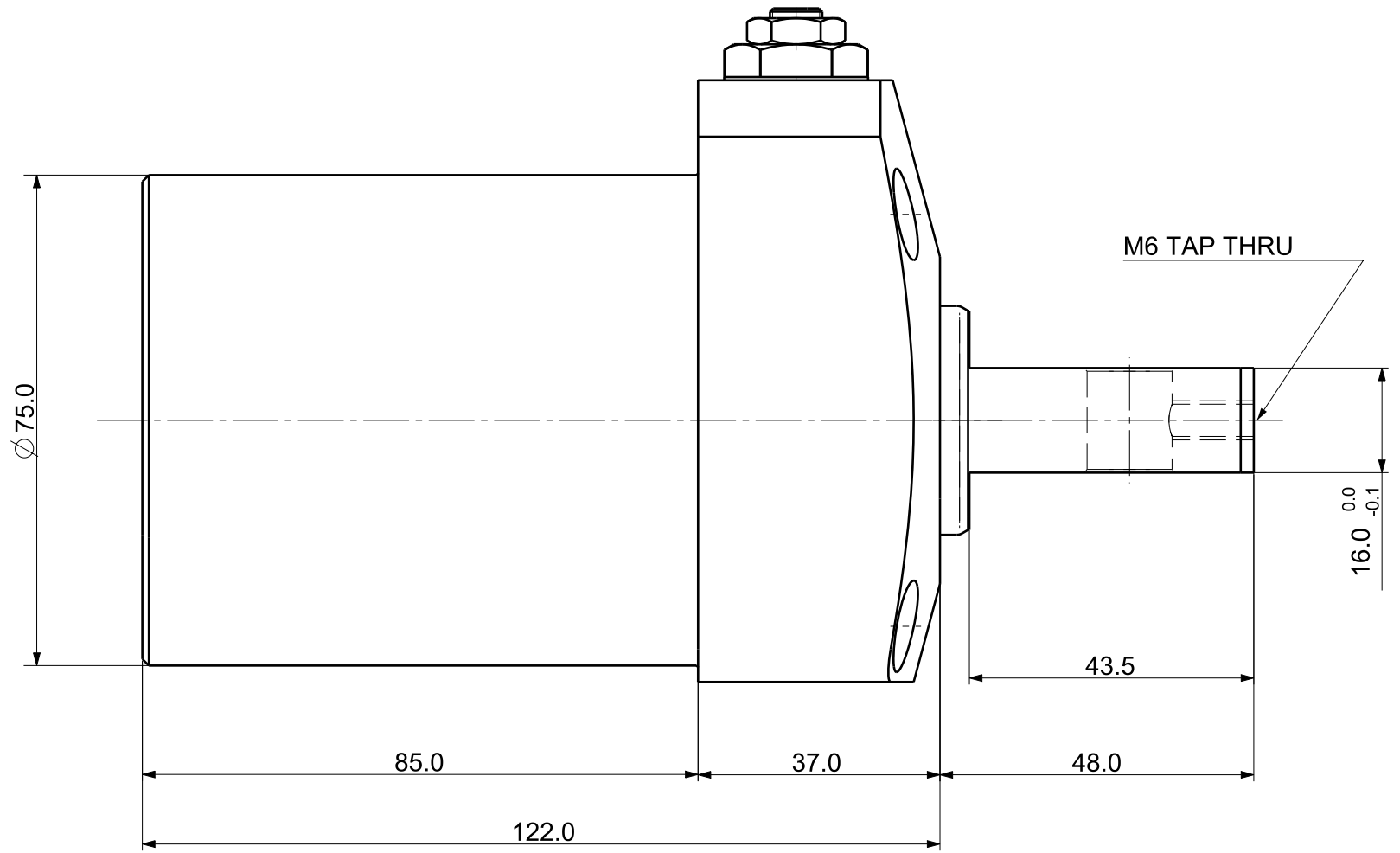
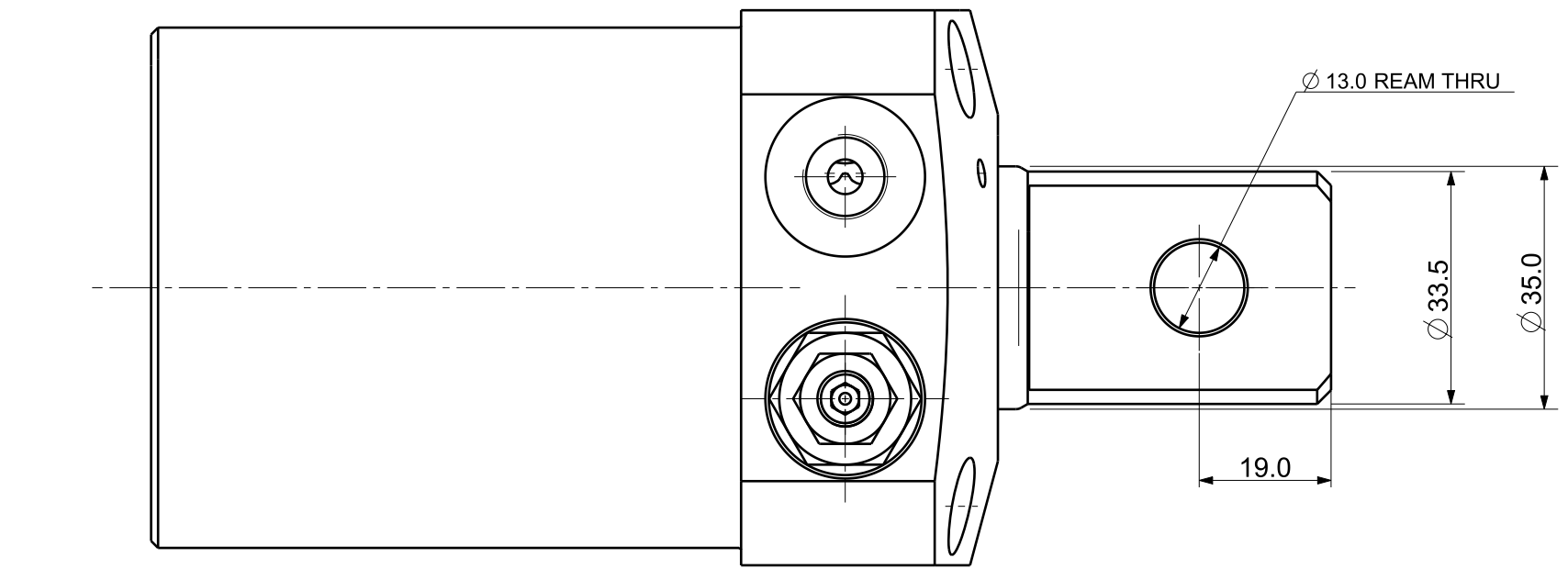



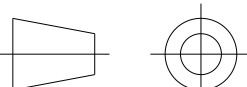

FILE NAME:

REVISIONS				
ZONE	LTR	DESCRIPTION	DATE	APPROVED



Isometric view (3:4)

- NOTE
1. MODEL No : CSDR-6028GPV
 1. PISTON DIA : $\phi 60.0$
 2. ROD DIA : $\phi 35.0$
 3. STROKE = 28.0mm(Straight : 12.0 mm+Swing : 16.0 mm)
 4. OPERATING PRESSURE : 20~70 Kg/Cm²)
 5. OPERATING TEMPERATURE : 0 ~ 60 °C

UNLESS OTHERWISE SPECIFIED		SIGNATURES		MO-DA-YR		<div> (주)케이제이에프</div> <div>TOTAL CLAMPING SYSTEMS</div>				
DIMENSIONS ARE IN MM		DRAWN				TITLE <div>SWING CLAMP</div>				
ALL SURFACES 6.3s		CHECKED								
TOLERANCES		APPROVED								
ANGLE X. ± .X ± 0.15 .XX ±		<div></div>								
FINISH		WORK ORDER NO				REF DWG NO.		DWG NO		A2
HEAT TREAT						-		CSDR-6028GPV		
						SCALE 		TOOL <input type="checkbox"/> PART <input type="checkbox"/> SHEET		OF