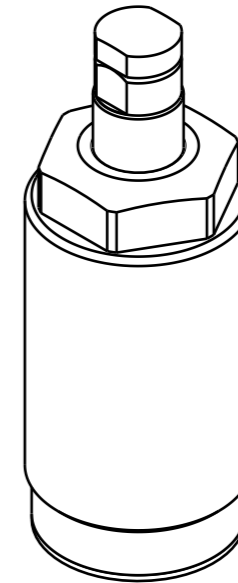
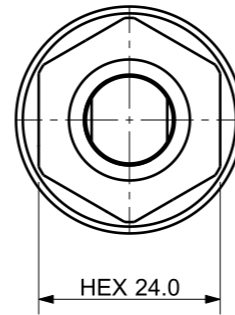
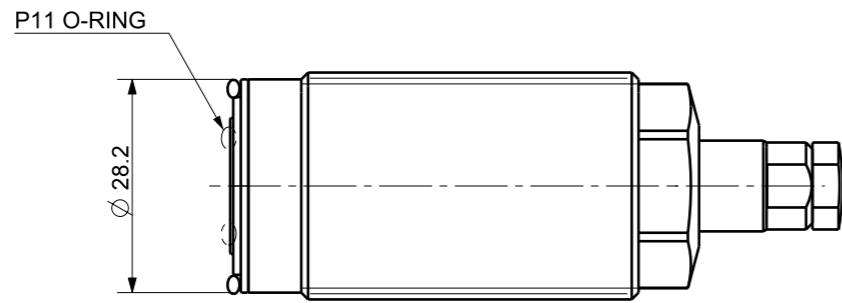
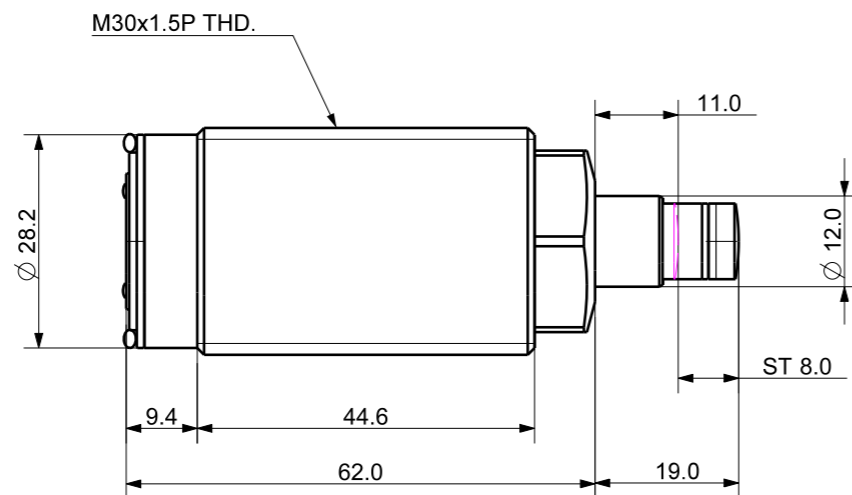


FILE NAME:

REVISIONS				
ZONE	LTR	DESCRIPTION	DATE	APPROVED



Isometric view (1:1)



NOTE

1. MODEL No : CWS-12081
2. PLUNGER STROKE : 8.0 mm
3. OPERATING PRESSURE : 25 ~70 Kg/cm²
4. OPERATING TEMPERATYRE : 0 ~ 60°C
5. SPRING ADVANCE TYPE

DET.NO	NAME	QTY	MAT'L	FINAL SIZES & PART No	REMARK
UNLESS OTHERWISE SPECIFIED		SIGNATURES		MO-DA-YR	
DIMENSIONS ARE IN MM		DRAWN		TITLE	
ALL SURFACES 6.3S		CHECKED		KJF 케이제이에프(주) TOTAL CLAMPING SYSTEMS	
TOLERANCES		APPROVED		WORK SUPPORT	
ANGLE ±		X ±		REF DWG NO. ---	
.X ± 0.15		.XX ±		DWG NO. CWS-12081_-	
FINISH ---		WORK ORDER NO		A3	
HEAT TREAT ---		SCALE /		TOOL <input type="checkbox"/> PART <input type="checkbox"/> SHEET OF	